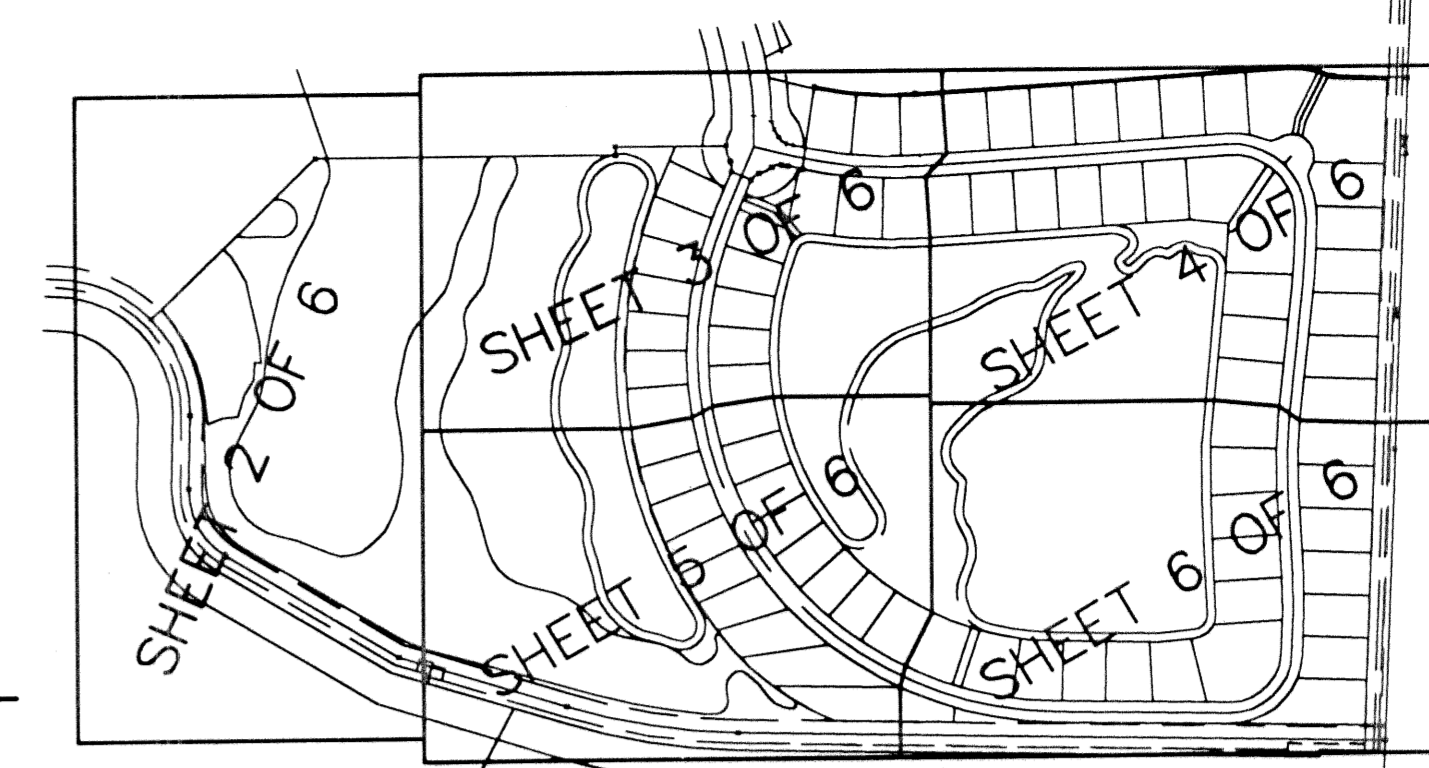
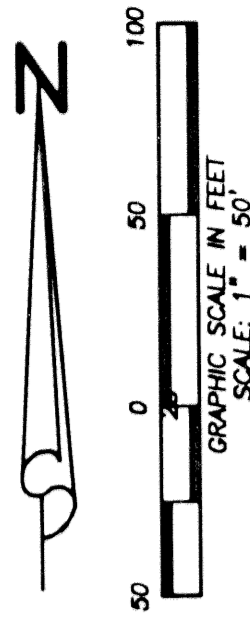


# FRENCHMAN'S RESERVE PCD - PLAT F

BEING A REPLAT OF TRACT F FRENCHMAN'S RESERVE PCD - PLAT ONE  
AS RECORDED IN PLAT BOOK 92, PAGES 11-20  
IN PALM BEACH COUNTY, FLORIDA

BEING A PARCEL OF LAND LYING IN SECTION 31,  
TOWNSHIP 41 SOUTH, RANGE 43 EAST, CITY OF PALM BEACH  
GARDENS, PALM BEACH COUNTY, FLORIDA.

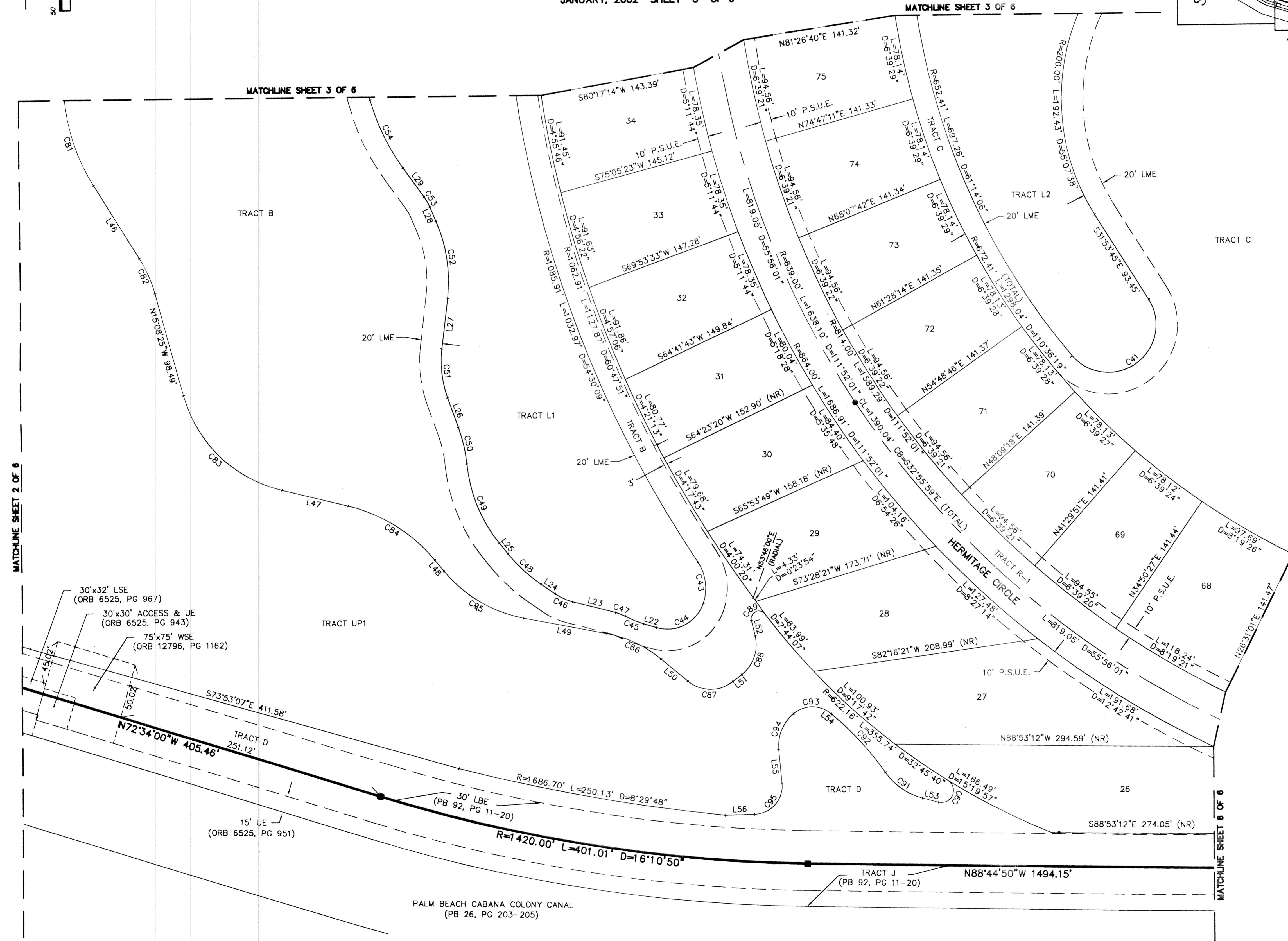
JANUARY, 2002 SHEET 5 OF 6



STATE OF FLORIDA  
COUNTY OF PALM BEACH  
THIS PLAT WAS FILED FOR  
RECORD AT \_\_\_\_\_ M.  
THIS \_\_\_\_\_ DAY OF \_\_\_\_\_  
A.D. 2001 AND DULY RECORDED  
IN PLAT BOOK \_\_\_\_\_ ON  
PAGES \_\_\_\_\_ AND \_\_\_\_\_

DOROTHY H. WILKEN  
CLERK CIRCUIT COURT

BY: \_\_\_\_\_  
DEPUTY CLERK



LINE TABLE			CURVE TABLE			
LINE	BEARING	LENGTH	CURVE	RADIUS	DELTA	LENGTH
L22	N72°52'47"W	12.26	C41	44.00	172°23'59"	132.39
L23	S75°45'31"E	41.11	C43	43.00	52°36'47"	39.49
L24	N55°31'06"W	15.68	C44	35.00	87°45'00"	53.60
L25	N38°14'18"W	12.49	C45	98.00	10°51'05"	18.56
L26	N19°34'27"W	29.26	C46	50.00	20°14'25"	17.66
L27	N06°51'22"E	47.29	C47	40.00	13°43'49"	9.59
L28	S23°05'20"E	14.16	C48	140.00	17°16'48"	42.22
L29	N35°34'52"W	33.35	C49	140.00	32°59'09"	80.60
L46	N31°31'32"W	79.97	C50	140.00	14°19'18"	34.99
L47	N75°59'17"W	62.70	C51	100.00	26°25'49"	46.13
L48	N39°10'13"W	13.47	C52	140.00	29°56'42"	73.17
L49	N79°02'12"W	78.63	C53	50.00	12°29'32"	10.90
L50	N49°51'58"W	32.11	C54	200.00	19°53'10"	69.42
L51	S52°13'25"W	10.57	C81	185.00	57°44'17"	186.43
L52	S13°17'33"E	14.74	C82	125.00	16°23'07"	35.75
L53	S75°12'17"E	15.42	C83	125.00	60°50'52"	132.75
L54	S49°51'56"E	1.33	C84	150.00	36°49'04"	96.39
L55	N05°19'22"W	30.76	C85	125.00	39°51'58"	86.97
L56	N88°48'32"E	27.35	C86	110.00	29°10'14"	56.00
			C87	33.00	77°54'37"	44.87
			C88	35.00	65°30'57"	40.02
			C89	7.10	156°36'51"	19.41
			C90	11.00	162°39'07"	31.23
			C91	60.00	40°33'39"	42.48
			C92	275.00	15°13'18"	73.06
			C93	27.00	79°49'44"	37.62
			C94	38.68	55°37'42"	37.56
			C95	26.00	94°07'54"	42.72

- LEGEND:**
- CL = CENTERLINE
  - WSE = WATER AND SEWER EASEMENT
  - PBCO = PALM BEACH COUNTY
  - LAE = LIMITED ACCESS EASEMENT
  - LBE = LANDSCAPE BUFFER EASEMENT
  - LSE = LIFT STATION EASEMENT
  - (C) = CALCULATED
  - CMB = COMMISSIONERS' MINUTES BOOK
  - DE = DRAINAGE EASEMENT
  - DB = DEED BOOK
  - FND = FOUND
  - FPL = FLORIDA POWER & LIGHT
  - IP = IRON PIPE
  - IRC = IRON ROD WITH PLASTIC CAP
  - LB = LICENSED BUSINESS
  - LS = LICENSED SURVEYOR
  - LME = LAKE MAINTENANCE EASEMENT
  - LMAE = LAKE MAINTENANCE ACCESS EASEMENT
  - (M) = MEASURED
  - MON = MONUMENT
  - ORB = OFFICIAL RECORD BOOK
  - (P) = PLAT
  - PB = PLAT BOOK
  - PG = PAGE
  - POB = POINT OF BEGINNING
  - POC = POINT OF COMMENCEMENT
  - PRM = PERMANENT REFERENCE MONUMENT
  - PSUE = PRIVATE NON-EXCLUSIVE EASEMENT
  - R/W = RIGHT-OF-WAY
  - R/PB = ROAD PLAT BOOK
  - (S) = SURVEY
  - UE = UTILITY EASEMENT
  - PERM = PERMANENT CONTROL POINT
  - SET 4"x4" CONCRETE MONUMENT
  - \*LB#7055\*

**Wantman Group, Inc.**  
Engineering ♦ Surveying ♦ Mapping  
901 NORTHPOINT PARKWAY, SUITE 204  
WEST PALM BEACH, FL 33407  
(561) 687-2220 phone (561) 687-1110 fax  
CERT No. 6091 - LB No. 7055

CAD	K:\TOLLBROS\FRENCHMAN\DWG\218PLATF		
REF	K:\TOLLBROS\FRENCHMAN\DWG\218MG01		
FLD	FB.	PG.	JOB 01-218F
OFF	AJP/MRJ	DATE	11/14/01
CKD	RBP	SHEET 5 OF 6	DWG